



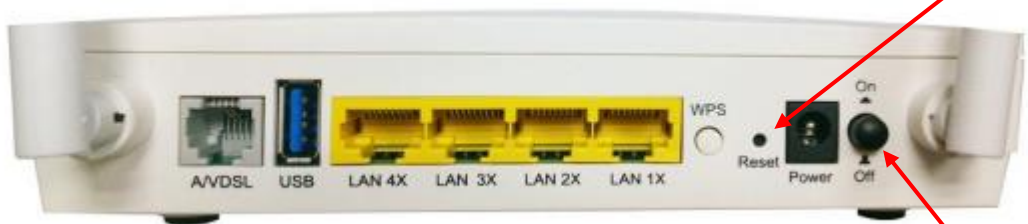
Only the first two LEDs on the modem light up



- This is a malfunction of the modem, only the power diode can light up in this direction, or these diodes light up red.
- First, we try turning it off/on and watching the modem indicators.
- If the previous operation did not help, you need to perform a factory reset of the modem.



The power LED must never light up red after starting up.



Reset button.

ON/OFF button



Attention: After performing the factory reset, the Comtrend modem does not have an immediate boot indication.

Therefore, it is necessary to turn on the modem with the back on/off button.

What to do if the problem persists?



- Couldn't fix it with a reset? In this case, the fault in the modem is most likely irreparable.
- If the modem is from Vodafone, check the invoice to make sure it is newer than two years. If it is older, you need to purchase a new modem.
- When the modem is newer, we recommend visiting a Vodafone store, where we will file a claim and lend you a replacement modem