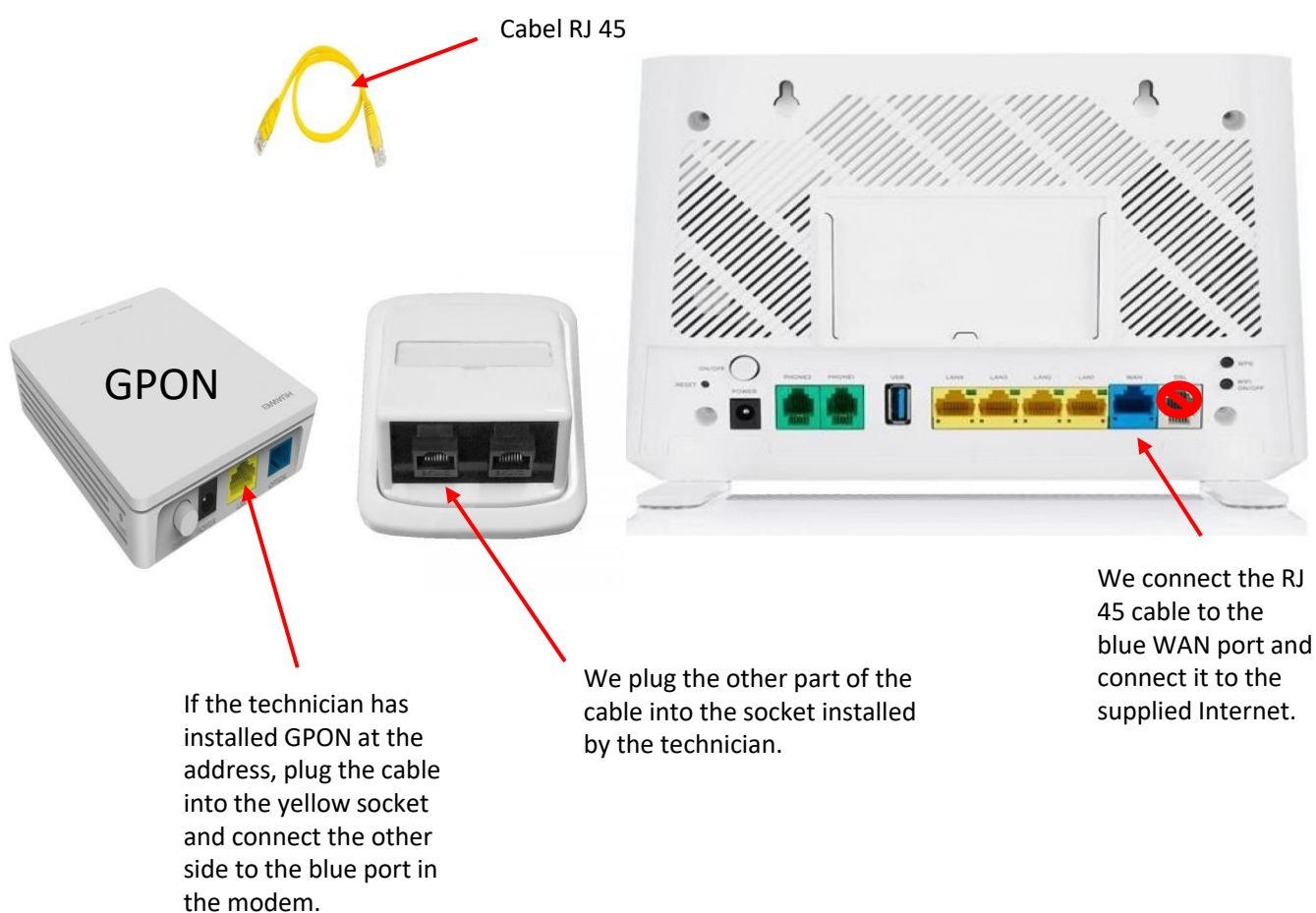




Connection of the Zyxel T50 A/B modem to the optical internet

- To connect the modem over the optical cable with a wider end, i.e. RJ 45.
- Now we will connect to the GPON, the device installed by the technician or the socket itself.
- On the modem, we connect it to the WAN port, we leave DSL empty.
- Then let the modem download and install the necessary updates.



After connecting, the modem still does not connect to the network:



- The modem can load for longer than a few minutes, and it also downloads the necessary updates from the beginning.
- This operation takes 2 hours maximum.
- If even after that the modem and line are not functional, you need to contact the technical support department or use the Tobi chatbot on the www.vodafone.cz website.
- During the loading period, the Internet indicator (globe) may light up red or the modem may reset itself several times.